

FIGURE 1

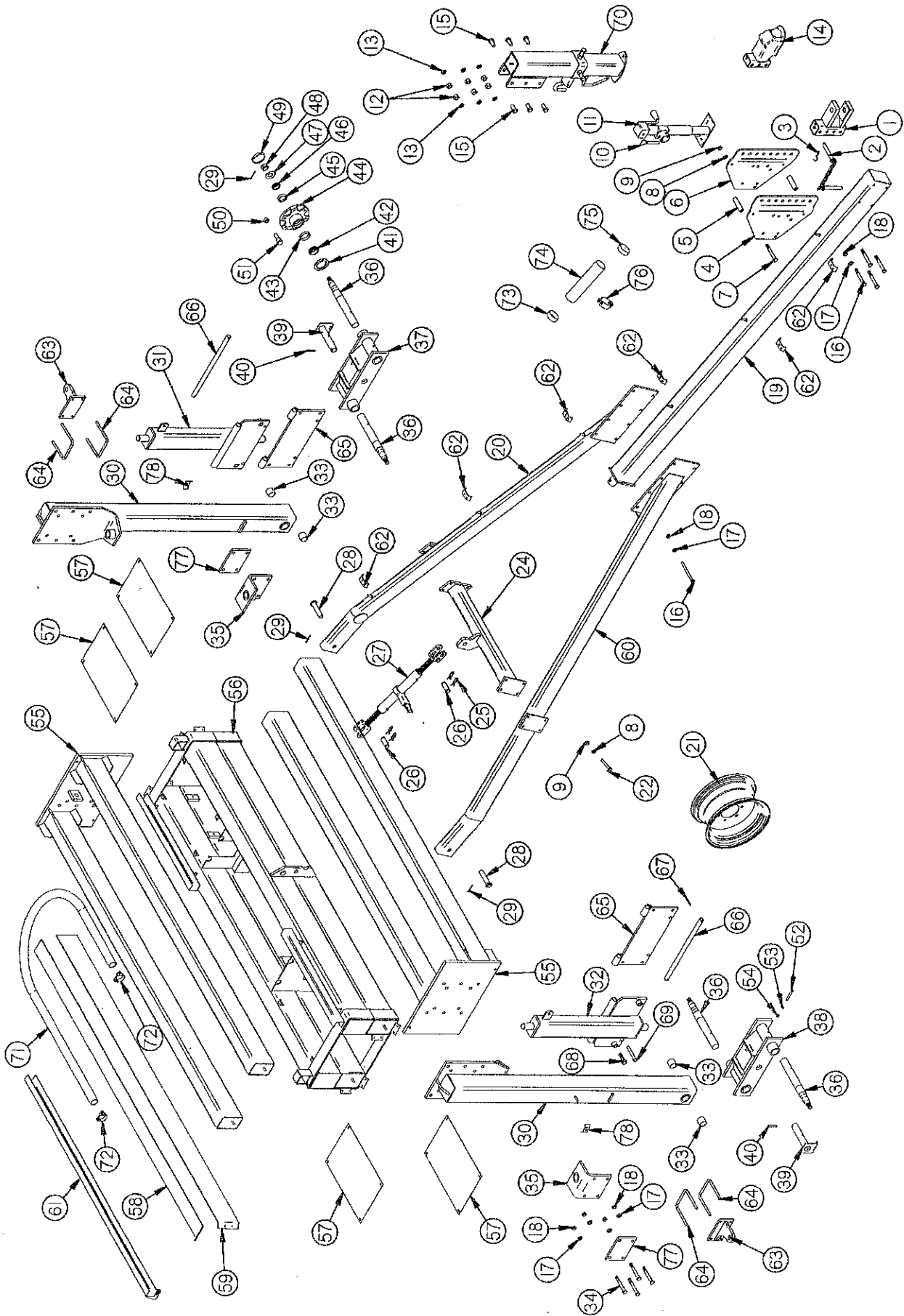


FIGURE 1
H & S HD II RAKE
MAIN FRAME

ITEM	PART NO.	DESCRIPTION	ITEM	PART NO.	DESCRIPTION
1.	HD83	Hitch Clevis	43.	RG100	Inner Race
2.	BFR450	Hitch Pin	44.	RG101	Hub
3.	ES7	Hair Pin	45.	RG47	Outer Race
4.	HD84	Hitch Mount Right	46.	RG48	Outer Bearing
5.	HD85	Hitch Mount Spacer	47.	RG200	Washer
6.	HD86	Hitch Mount Left	48.	RG105	Nut
7.	BFR405	1/2" x 5-1/2" Bolt GR.5	49.	RG103	Dust Cap
8.	R35	Lock Washer	50.	BFR144	Lug Nut
9.	R29	1/2" Nut	51.	RG102	Stud Bolt
10.	BFR4	Jack Pin & Chain	52.	DWM172	3/8" x 3-1/2" Bolt GR.5
11.	BFR223	Jack	53.	B68	3/8" Lock Washer
14.	HD172	Ball Coupler (Optional)	54.	K60	3/8" Nut
16.	HD88	5/8" x 6" Bolt GR.5	55.	HD103	Inner Slider
17.	T69	5/8" Lock Washer	56.**	HD104	Center Slider Outside
18.	T68	5/8" Nut	***	HD183	Center Slider Outside
19.	HD89	Pole Front	57.	HD105	Shield
20.	HD90	Pole Back Left	58.	HD106	Poly Slide Narrow 1/4"
21.	12N24	Wheel 8 x 15	59.	HD107	Poly Slide Wide 1/4"
*	RG128	Tire 9.5L x 15	*	HD155	Poly Slide Narrow 3/16"
22.	LW131	1/2" x 3-1/2" Bolt GR.5	*	HD156	Poly Slide Wide 3/16"
24.	HD92	Jack Mount Tube	60.	HD108	Pole Back Right
25.	T144	Hair Pin	61.**	HD140	Hose Channel
26.	T143	Jack Pin	***	HD184	Hose Channel
27.	T138	Ratchet Jack	62.	23N67	Hose Bracket
28.	HD93	Pole Pivot Pin	63.	HD151	Cylinder Mount Upright End
29.	T72	5/32" x 1-1/2" Cotter Pin	64.	HD152	1/2" U-Bolt
30.	HD94	Axle Upright	65.	HD164	Beam Pivot Plate
31.	HD95	Beam Pivot Left	66.	HD165	Hinge Pin
32.	HD96	Beam Pivot Right	67.	3G22	5/16" x 1-3/4" Expansion Pin
33.	HD153	Bushing	68.	HD166	3/4" x 2-1/2" Bolt GR.5
34.	HD181	5/8" x 7" Bolt GR.5	69.	HD167	5/8" x 3-1/2" Bolt GR.5
35.	HD98	Upright Bottom Pivot	71.**	HD169	Hose Shield
36.	HD99	Spindle	***	HD185	Hose Shield
37.	HD100	Tandem Axle Left	72.**	HD170	Hose Clamp (Size 40)
38.	HD101	Tandem Axle Right	***	HD186	Hose Clamp (Size 48)
39.	HD102	Tandem Pin	73.	S414	Cap
40.	12V59	3/8" x 2-3/4" Roll Pin	74.	S415	Manual Holder Tube
41.	RG98	Seal	75.	S418	Cap w/hole
42.	RG99	Inner Bearing	76.	S416	Manual Hanger Clamp
NOTE: * (MEANS NOT SHOWN)			77.	HD182	Pivot Mount Plate
** (USED SERIAL #0032 AND BEFORE)			78.	HE42	Hose Clamp
*** (USED SERIAL #0033 AND AFTER)					

FIGURE 2

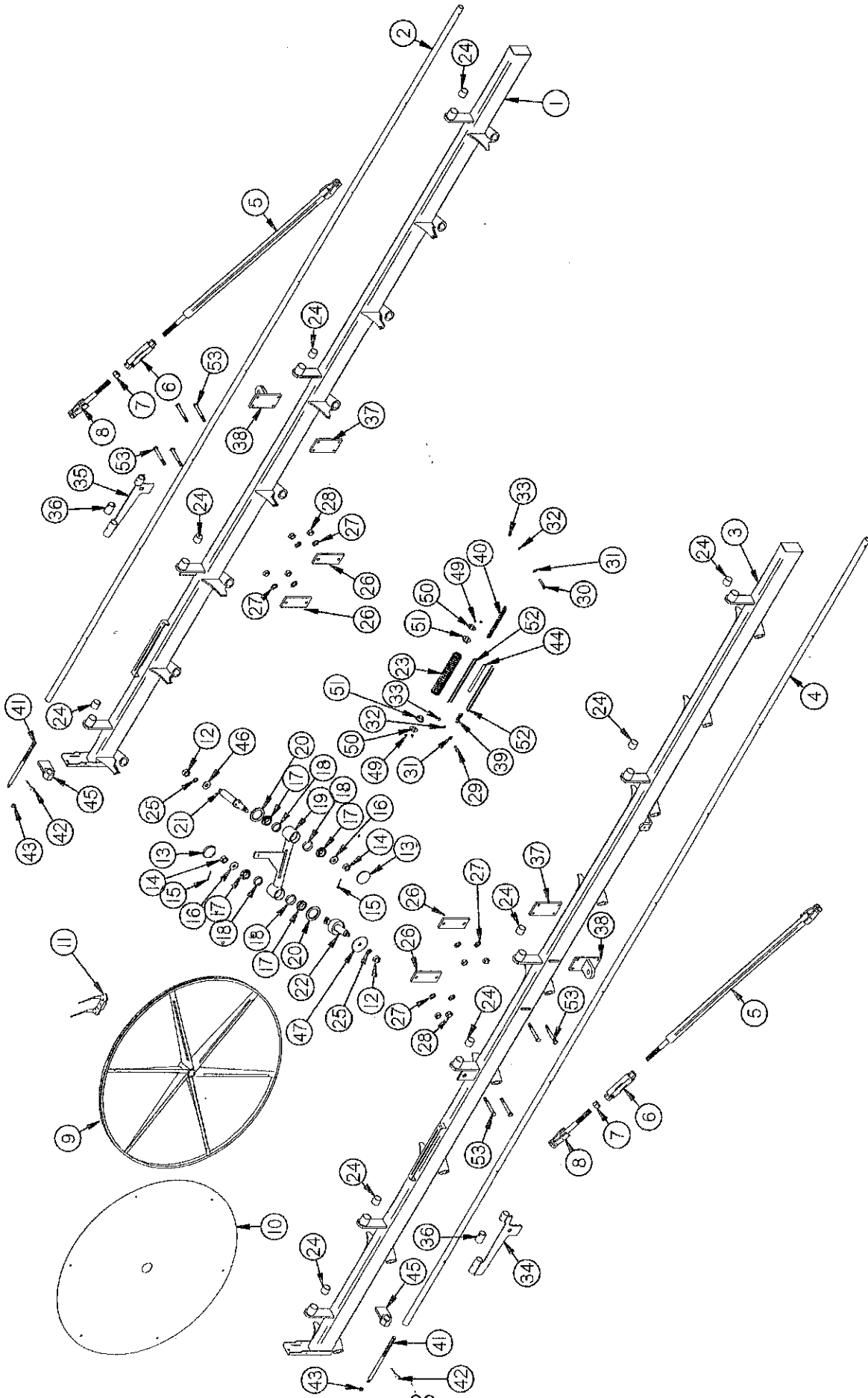
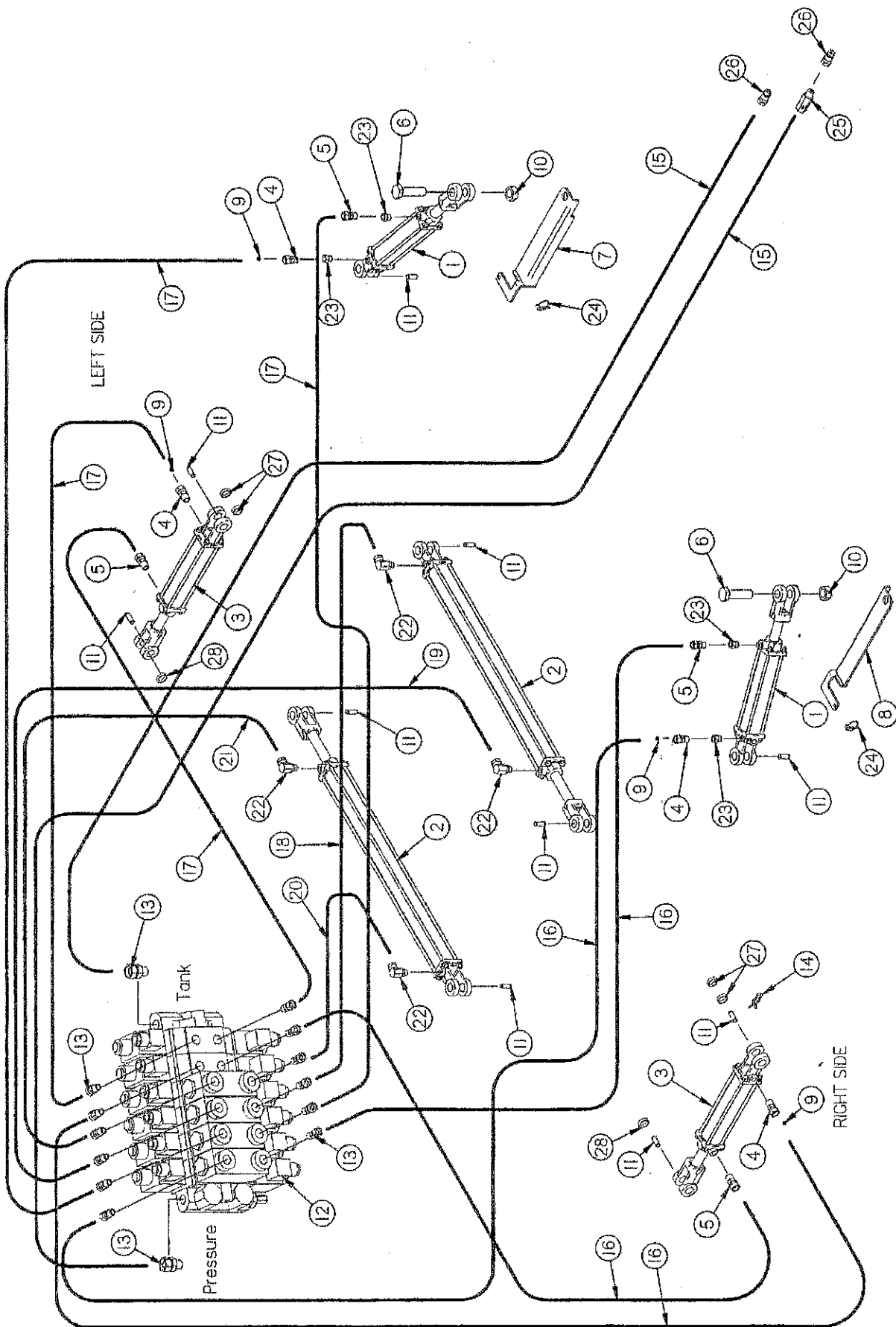


FIGURE 2
H & S HD II RAKE
RAKE BEAMS

ITEM	PART NO.	DESCRIPTION	ITEM	PART NO.	DESCRIPTION
1.	HD109	Rake Beam Left	27.	T69	5/8" Lock Washer
2.	HD110	Lifting Pipe Left	28.	T60	5/8" Lock Nut
3.	HD111	Rake Beam Right	29.	17G141	3/8" x 1-1/4" Bolt GR.5
4.	HD112	Lifting Pipe Right	30.	T123	3/8" x 2-1/4" Bolt GR.5
5.	HD113	Stabilizer Tubing	31.	X67	3/8" Flat Washer
6.	HD114	Turnbuckle	32.	B68	3/8" Lock Washer
7.	HD115	Jam Nut	33.	K93	3/8" Lock Nut
8.	HD116	Turnbuckle End	34.	HD130	Lifting Cylinder Mount Right
9.	HD117	Rake Wheel	35.	HD131	Lifting Cylinder Mount Left
10.	HD118	Wind Guard	36.	HD175	Lifting pipe Collar
11.	HD119	Rake Tooth	37.	HD91	Stand Off Mounting Plate
12.	HD120	3/4" Nut	38.	HD132	Cylinder Mount
13.	RG103	Dust Cap	39.	HD133	Rake Wheel Short Chain
14.	RG82	7/8" Nut	40.	HD134	Rake Wheel Chain
15.	T172	5/32" x 1-1/2" Cotter Pin	41.	HD154	Acme Rod
16.	HD121	7/8"ID x 1-3/4" OD Washer	42.	BFR137	Hair Pin
17.	HD122	Bearing	43.	R29	1/2" Nut
18.	3G18	Bearing Race	44.	HD179	Spring Stopper
19.	HD123	Rake Arm	45.	BFR426	Rake Pressure Handle
20.	HD124	Seal	46.	HD157	Pivot Washer
21.	HD125	Pivot Spindle	47.	HD158	Spindle Washer
22.	HD126	Rake Wheel Spindle	48.	HD171	Anti-Wrap
23.	HD127	Spring	49.	D65	1/4" Lock Nut
24.	HD128	Bushing	50.	HD176	Spring Holder Washer
25.	RG113	Star Washer	51.	HD178	Torsion Bar
26.	HD202	Beam Plate	52.	RG174	5/8" x 5" GR.5 Bolt
NOTE: * (MEANS NOT SHOWN)			*	HD201	Complete Spring Assembly

~~HD 203 *Left*
HD 204 *Right*~~

FIGURE 3



**FIGURE 3
H & S HD II RAKE
HYDRAULICS**

ITEM	PART NO.	DESCRIPTION
1.	HD135	Hydraulic Cylinder 3" x 8"
2.	HD136	Hydraulic Cylinder 3-1/2" x 60"
3.	16SV171	Hydraulic Lift Cylinder 2" x 10"
4.	BFR122	3/8" Union Adapter
5.	DWM233	3/8" Union Adapter
6.	BFR177	1" x 4" Bolt GR.5
7.	HD137	Transport Lock Left
8.	HD138	Transport Lock Right
9.	BFR120	.062 Orifice
10.	BFR178	1" Lock Nut
11.	T143	Hydraulic Cylinder Pin
12.	HD139	Hydraulic Valve
13.	DWM268	9/16" Male O-Ring to 3/8" Pipe Union Adapter
14.	T144	Cylinder Pin Clip
15.	HD141	Hydraulic Hose 3/8" x 288" 1/2"MP & 3/8"MP
16.	HD142	Hydraulic Hose 1/4" x 288" 3/8"MP & 3/8"MP
17.	HD143	Hydraulic Hose 1/4" x 210" 3/8"MP & 3/8"MP
18.	HD144	Hydraulic Hose 1/4" x 36" 3/8"MP & 1/2"MP
19.	HD145	Hydraulic Hose 1/4" x 96" 3/8"MP & 1/2"MP
20.	HD147	Hydraulic Hose 1/4" x 60" 3/8"MP & 1/2"MP
21.	HD146	Hydraulic Hose 1/4" x 20" 3/8"MP & 1/2"MP
22.	WM175	1/2" 90° Union Adapter
23.	JB82	Bushing 1/2" to 3/8"
24.	BFR443	Clip Pin
25.	DF18	1/2" Check Valve
26.	DWM205	1/2" Male Quick Coupler
27.	X94	Spacer 5/16" x 1"
28.	HD187	Spacer 3/4" x 1"

FIGURE 4

FIGURE 4
WIRING

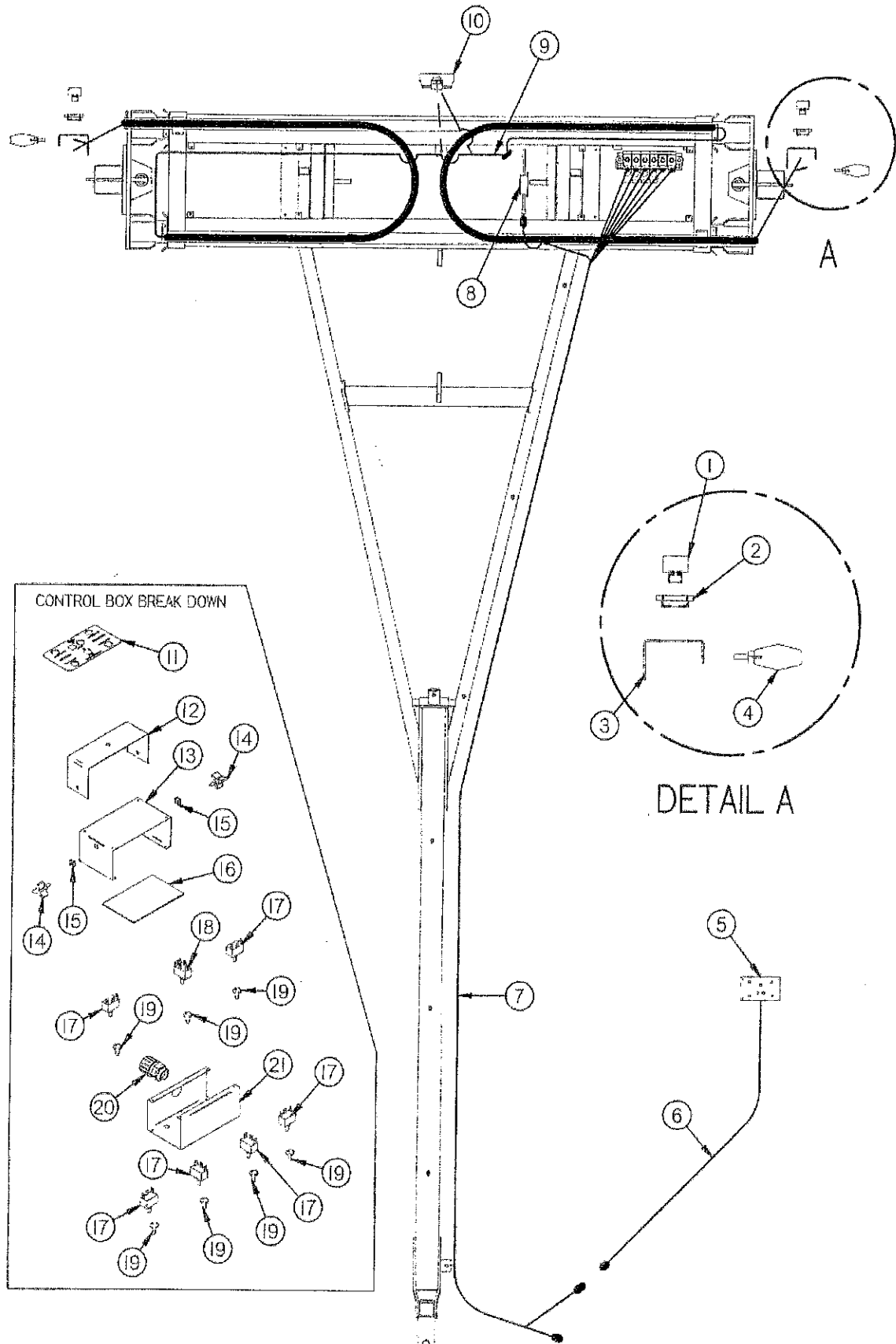
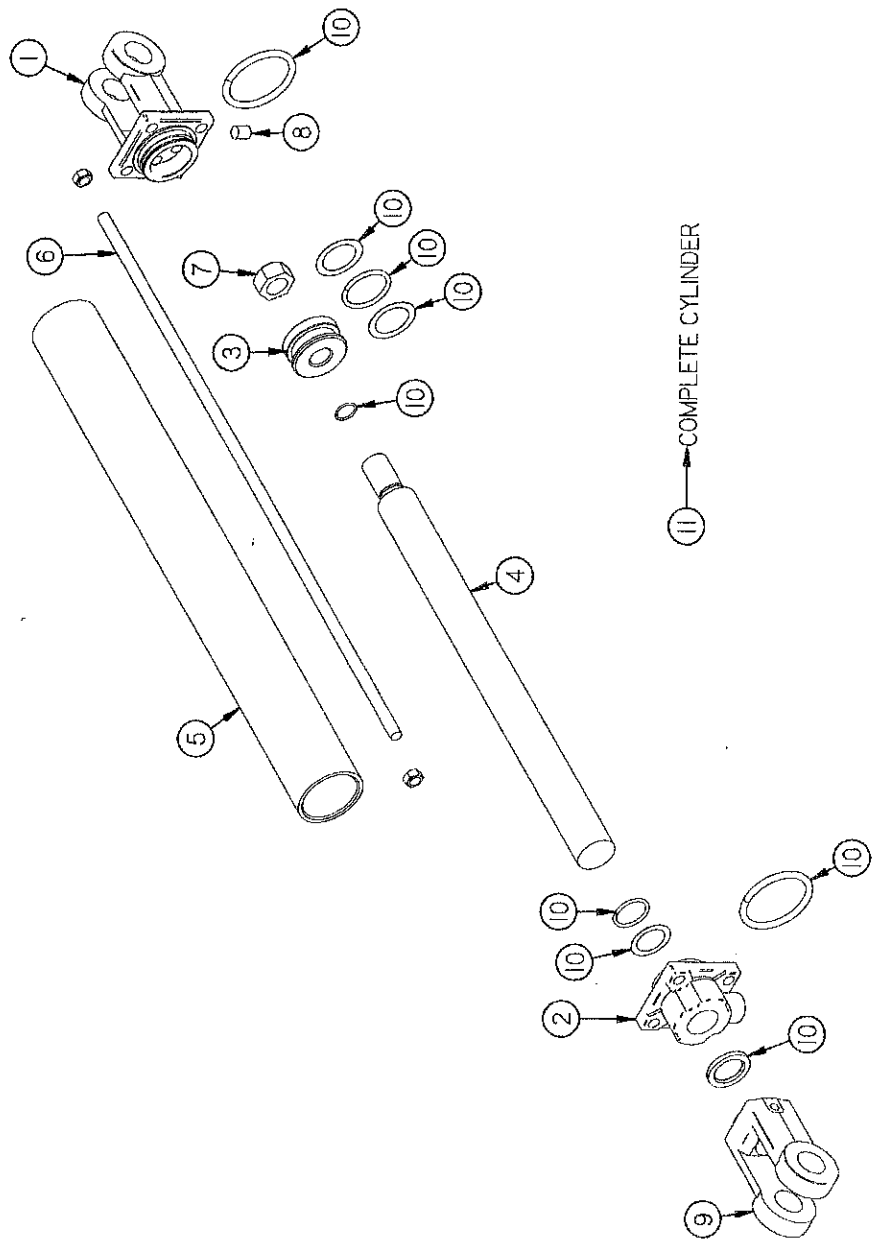


FIGURE 4
H & S HD II RAKE
WIRING

ITEM	PART NO.	DESCRIPTION
1.	S310	Red Tail Light
2.	S308	Rubber Light Mount
3.	HD148	Light Bracket
4.	DWM129	Yellow Hazard Light
5.	HD180	Complete Control Box w/Harness
6.	HD160	Control Box Whip
7.	HD161	Main Harness
8.	S441	Light Module
9.	HD149	Tail Light Loom
10.	DWM130	Flood/Work Light
11.	61003	Control Box Decal
12.	DWM326	Control Box Mount
13.	DWM140	Control Box Bottom
14.	HD174	Knob
15.	HD173	Panel Nut
16.	HD163	Poly Shield
17.	16SV319	Momentary Switch
18.	HD159	Master Switch
19.	16SV235	Switch Boot
20.	DWM175	Strain Relief (Cord Grip)
21.	HD150	Control Box Top

FIGURE 5



**FIGURE 5
H&S HD II RAKE
HYDRAULIC CYLINDERS**

	LIFT CYLINDER 2" x 10"	WING CYLINDER 3" x 8"	FRAME WIDTH 3-1/2" x 60"	
ITEM	PART NO.	PART NO.	PART NO.	DESCRIPTION
1.	23N142A	DWM192	16SV157A	Clevis Cap
2.	23N143A	HD188	HD189	Rod Cap
3.	23N144	DWM194	HD198	Piston
4.	16SV168A	HD190	HD191	Rod
5.	16SV169	HD192	HD193	Cylinder Tube
6.	16SV170	HD194	HD195	Tie Rod
7.	23N148	DWM198	DWM198	Piston Nut
8.	23N149	DWM199	DWM199	Plug
9.	23N150A	DWM200	DWM200	Rod Clevis
10.	23N151	HD196	HD197	Seal Kit
11.	16SV171	HD135	HD136	Hydraulic Cylinder